

THE BEACON

PRACTICE NEWS BULLETIN OF THE PG STUDENTS OF JOURNALISM AND MASS COMMUNICATION

Monday, 15 December 2025 / St Joseph's University / Vol:18 Issue: 51 / www.sjcdeptcomm.wordpress.com

Citizens flag payment issues

V.Nayonika

BENGALURU: A 50% rebate on traffic fines led to higher fine clearances across Bengaluru, with digital platforms witnessing uptake during the drive, though some citizens reported technical difficulties while making online payments. The rebate window, which ran from November 21 to December 12, resulted in the collection of Rs 4,53,21,400 in outstanding traffic fines. Citizens were able to clear fines through four payment options: the Karnataka State Police app, the Bengaluru Traffic Police (BTP) ASTraM app, the Traffic Management Centre, and traffic police stations across the city.

Rifath S, social media manager with the Bengaluru City Police, said, "Many citizens cleared fines through the ASTraM app, while some visited traffic stations." She added, "The rebate led to a spike in payments compared to regular periods and helped clear long-pending violations."

Citizen experiences, however, were mixed. Gowtham Chandra, a Bengaluru resident, said he chose to clear his pending fines only because of the rebate. "I would not have paid if the rebate had not been available," he said. He also added that he initially attempted to pay through the app but faced server issues, prompting him to clear them in person. Chandra also questioned the long-term impact of such rebate drives, saying concessions may encourage motorists to delay payments in anticipation of future rebates rather than follow traffic rules consistently.

Google strengthens AI safety with fact verification

Disha Banthia

Google is set to launch a tri-layer safety net approach that will now run parallel to Google searches to verify model outputs, aiming to eliminate hallucinations and build real-time fact-check verification systems. Scheduled for launch in January 2026, Google's Gemini 4.0 will release structured data outputs that can be repeatedly used to handle massive datasets without slowing down the system or increasing costs. Another major highlight is the introduction of Gemini Nano 4.0 for Pixel 10 devices. This new version is integrated with Random Access Memory (RAM) to run efficiently, utilising universal screen context without negatively impacting background applications.



Representative Image

Google

"The engineering team pulled a rabbit out of the hat with RAM efficiency here," said Dhruv (name changed), Technical Program Manager at Google. "Nano can securely read what's on your screen, whether it's a text or a map, and give you suggestions without sending data to the cloud. It's fully private." Google has introduced a citation-by-default function for its enterprise

clients, requiring the model to cite data that can be proven through verified sources and specific references, thereby building a strictly evidence-based model for business applications. With improved abilities, the new model will be able to identify knowledge gaps with the help of real-time check systems, flagging data that is not based on evidence.

To enhance learning efficiency, Google uses a filtration method to balance between speed and accuracy. For developers, there is a noticeable shift in the way they interact with the platform. They can now identify schema loops that the model cannot break out of. This ensures a reliable data format with the help of native structured output capability, which

removes the problem of models that rely on clean JavaScript Object Notation (JSON). Stateful caching allows developers to store large instructions and data at once that can be reused multiple times. The Application Programming Interface (API) enables the use of saved cache entries, which noticeably reduces cost and the amount of data produced for high-traffic apps, making it more efficient to run. Google, with the help of local Red Teams set up in over 40 countries, is ensuring the model is tested against regional slang, cultural nuances, and sensitivities. The system has been tuned to understand contextual appropriateness, acknowledging that safety standards vary from culture to culture and taking cultural sensitivity into account.

Urban women face increased risk of oral cancer

Aryan Arun

BENGALURU: Oral health specialists in Bengaluru find that urban women are increasingly showing early signs of tobacco-linked oral cancer, considering their lifestyle, food choices and late diagnosis. Doctors say women often get tested late, despite showing clear symptoms.

A recent women-centric study focused on habitual women oral cancer patients, conducted by a team from Jawaharlal Nehru Centre for Advanced Scientific Research (JNCASR), Bengaluru, has revealed that genetic triggers may be the driving cause of cancerous tumours among

female tobacco users in Karnataka's Kolar district. Out of the ten genes with mutations singled out, two caught the attention of researchers.

Oncologist at Sparsh Hospital, Dr Kumar, pointed to genetic predispositions on chromosomes 5 and 6, near genes like CLPTMIL-TERT and HLA-DRB1, which may heighten susceptibility in certain individuals exposed to risks. Hormonal influences, including estrogen and disruptions in hormones like prolactin or follicle-stimulating hormone, could play a role in promoting precancerous cell changes, particularly in

postmenopausal women.

Dr Devaiah, Chief Dentist at Mobident, described the screening approach for suspected users. "First and foremost, we look at the general hygiene of the patient. In tobacco-linked cases, we usually find persistent white or red patches in their inner cheeks, gums, tongue, floor of the mouth and non-healing mouth ulcers that serve as indicators." He mentioned that multiple factors bring about the virus in the mouth, not just a single trigger, emphasising that hormones can influence how damage builds up over time.

Dr Kumar also pointed out

major gaps in research and data.

"Very few pharma agencies in India work within the realm of oral cancer, especially for women. The medicines required are also very expensive for small dosages. Additionally, insurance has not been made compulsory for oral cancer, leading women to push their check-up to the last minute."

Although the study relied on a limited number of subjects, doctors urge the need for more women-focused cancer studies in India, underlining the fact that the findings of the research need to be tested in a larger urban setting to establish parameters and patterns.

NH 85

Jacaranda trees axed illegally

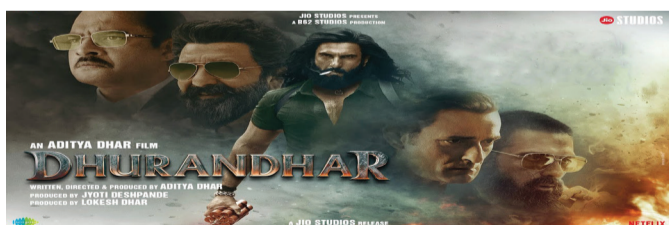
Anaina Kasim

Environmentalist Sandeep Anirudhan termed the felling of Jacaranda trees on National Highway 85 as unethical and illegal, emphasising the government's failure to uphold mandatory Environmental Impact Assessment (EIA) and not holding public consultations. Jacaranda trees, also locally known as Neela Vaka, have served as a guardian of the Kochi-Dhanushkodi NH85 for generations. The decision to log down these trees was taken to widen roads, against which a petition was filed by the Animals and Nature Ethics Community (ANEC) Trust to seek urgent state intervention, as it violates the Forest Conservation Act of 1980. While speaking to *The Beacon*, Sandeep proposed a creative solution to widen the road without destruction, by acquiring land on one side and keeping trees as a median for one-way traffic to protect the green cover. To stop the illegal activity, he also advised activists to file an FIR directly against officials to resolve this issue in a legal and ethical manner.

Dhurandhar: A Slow-Burn Spy Thriller

Akhil Raj

Dhurandhar tells the story of Hamza Ali Mazari (Ranveer Singh), an Indian operative who slips into Pakistan to infiltrate a dangerous network. Aditya Dhar doesn't rush to the explosions or heroics; instead, he builds a steady, almost suffocating sense of pressure as Hamza tries to climb the ladder without giving himself away. Ranveer Singh is dialled in here, no excess, just a tight, controlled intensity. Akshay Khanna takes the spotlight as Rehman Dakhait, a senior Pakistani figure, all sharp pauses and understated



Dhurandhar movie poster

ksboxoffice.com

menace. R. Madhavan brings a quiet authority as IB Chief Ajay Sanyal, while Arjun Rampal's Major Iqbal has that effortless cool he's known for. Rakesh Bedi ends up being one of the film's pleasant surprises as Nabil Gabol, Hamza's colleague and mentor. Shashwat Sachdev's music does a lot of the heavy lifting,

blending tension with old-school Bollywood touches that give the film some emotional texture. In the end, Dhurandhar works because of its mood, its restraint, and performances that never push too hard. It's a spy drama that grips you quietly and doesn't feel the need to shout.

Strict logins disrupt workflow

Niranjana Jayan

Multi-device users across creative and digital fields say their workflow would get disrupted as messaging platforms begin to enforce stricter login requirements across web and desktop. The new SIM binding rules under the Telecommunication Cybersecurity Amendment 2025 mandate messaging apps like WhatsApp, Telegram and Signal to remain linked to an active SIM card to function. The rule has been introduced to curb cyber fraud and enhance authentication, making web and desktop versions

automatically log out every six hours and requiring repeated QR authentication. Graphic designer Hrythik Agi said the rule would break the flow of routine coordination. He added that the tasks that require constant switching between the laptop and phone are slower. "Even small interruptions affect how quickly files and messages move across devices." Ayush Sharma, co-founder of AP Media Production, stated that multiple logins would create a hindrance for the creative team handling fast and continuous creative exchange.